



Non rotating component test stands

HNRCTS-C-350



The test stands are designed to perform maintenance tests according to the CMM of non rotating aircraft hydraulic components such as actuators, valves, fuses and servo assemblies. These systems are fully computerised to provide maximum control efficiency, leading to repeatability of test procedures and accurate test results. The test stand is suitable for all 5000 psi A/C system components like installed on A380, A350 and B787.

The test stands include following subassemblies:

- Power pack with accessories
- Test station
- Electrical cabinet
- Computer control console

HNRCTS-C-350

Main technical features

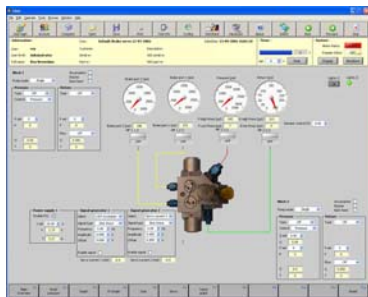
Supply pressure circuit characteristics	: 10-350 bar / 145-5000 psi (up to 270 ltr/min). : 0.28-20.7 bar / 4-300 psi (at 239 ltr/min). : 0-42 bar / 0-90 psi (static). : proportional adjustable flow control.
Maximum static proof pressure circuit	: 700 bar / 10150 psi (up to 5 ltr/min).
Return pressure circuit characteristics	: 0-20.7 bar / 0-300 psi (up to 270 ltr/min). : 10-207 bar / 145-3000 psi (up to 270 ltr/min). : proportional adjustable flow control.
Multifunctional system ports	: 6 ports, all of them can be either pressure, return or closed. : automatic switch of ports without disconnecting UUT. : ports divided in 2 groups (4 and 2 ports) to create two independent pressure and return setups.
Flow measurement system	: 1 pce in each pressure line (high flow 1-150 ltr/min), 2 pcs in each return line (high flow 1-300 ltr/min and low flow 0.02-10 ltr/min), 1 pce freely connectable (0.04-80 ltr/min).
Accuracy	: 0.5% of measured flow.
Pressure measurement system	: 2 pcs pressure transducers in each port (0-10 bar / 0-145 psi and 0-400 bar / 0-5801 psi).
Accuracy	: 0.25% of full scale.
Filtration	: high pressure filters 3 micron abs. Return filter 10 micron abs.
Shop air circuit	: 0-150 psi (2 each).
Cooling system	: water.
Temperature range	: 25-85°C adjustable over control system.
Control system	: Hycom "Advantouch" control system with manual, semi automatic and full automatic mode.
PLC system	: Siemens S7.
Data acquisition system	: National Instruments.
Software environment	: Windows XP Professional/Labview.
Servo current drivers	: ± 10, ± 30, ± 60 mA (2 pcs).
LVDT demodulations	: 6 pcs adjustable over control software.
Adjustable power supplies	: 2 pcs 0-32 VDC 0-5 Amp.

Following versions of the test stand are possible:

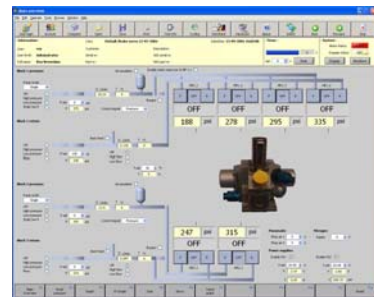
- Pump test stand : HPTS
- Pump and motor test stand : HPMTS
- Pump and AC/DCMP test stand : HPMPTS
- Pump, motor, PTU test stand : HRCTS

<u>Test stand version</u>	<u>Fluid type</u>	<u>Flow range - main supply</u>	<u>Pressure range - main supply</u>	<u>Design number</u>
HNRCTS	C = phosphate ester L = mineral oil	190-190 ltr/min 270-270 ltr/min	350 = 350 bar / 5000 psi	38410

Various options can be added on customer's request. It is also possible to supply the test stand with manual control system only.



the
**Strength of
Simplicity**



HYCOM
hydraulic systems