

Rotating component test stands



The test stands are designed to perform maintenance tests according to the CMM of rotating aircraft hydraulic components such as pumps, motors, AC/DC motor pumps and power transfer units of military fixed and rotary wing aircraft. These systems are fully computerised to provide maximum control efficiency, leading to repeatability of test procedures and accurate test results.

The test stands include following subassemblies:

- Drive/Generator system
- Power pack with accessories
- Test station cubicle
- Electrical cabinet
- Computer control console

Rotating component test stands

Main technical features

Maximum high pressure	: 350 bar / 5000 psi.
Maximum boost pressure	: 10 bar / 145 psi.
Maximum flow pump/motor test circuit	: 110 ltr/min – 30 USGPM.
Filtration	: HP 3 micron abs/LP 10 micron abs.
Fluid	: phosphate ester or mineral oil based fluids.
Drive power/Speed	: up to 90 kW/ 8000 rpm at reduced torque.
Electric DC	: 0-32 VDC supply.
Electric AC	: 115-200 VAC - 400 Hz control.
Cooling system	: water.
Control system	: Hycom “Advantouch” control system with manual, semi- and full automatic test mode with report generator.
PLC system	: Siemens S7 serie.
PC system	: most recent industrial type.

Following versions of the test stand are possible:

- Pump test stand : HPTS
- Pump and motor test stand : HPMTS
- Pump and AC/DCMP test stand : HPMPTS
- Pump, motor, PTU test stand : HRCTS

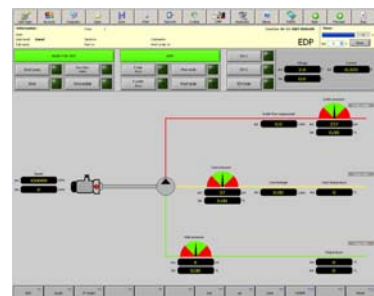
Hycom model code:

<u>Test stand version</u>	<u>Fluid type</u>	<u>Drive in kW</u>	<u>E/power supply</u>	<u>Design number</u>
HPTS	L = mineral oil	e.g. 90 kW	e.g. E / 400 V - 60 Hz	38410
HPMTS				
HPMPTS				
HRCTS				

Various options can be added on customer's request.



the
**Strength of
Simplicity**



HYCOM
hydraulic systems 